



20 NORTH YORKSHIRE WHARRAM PERCY

▶ Distance: 2¾ miles/4.4km ▶ Time: 1½ hours ▶ Grade: Easy



Hilltop bridleway between points 3 and 4.

PHOTO: FIONA BARTROP

PLAN YOUR WALK



ROUTE

Start/parking

Wharram Percy car park, grid ref SE867644

Is it for me? Gentle walk with fairly easy gradients over grassy terrain and along well signed paths and tracks. Ideal for children

Stiles None

PLANNING

Nearest town Malton

Refreshments None

Public toilets None

Public transport None

Maps OS Explorer 300; Landrangers 100 & 101

CHOSEN BY...

FIONA BARTROP

Situated along the route of the



Yorkshire Wolds Way between Thixendale and Sherburn, towards the northern end of the National Trail, is the site of the most famous deserted medieval village in the country, Wharram Percy. It's a peaceful, picturesque location, ideal for wandering around at leisure.

Specially designed for families are Yorkshire Wolds Way Tracker Packs which contain maps, games and challenges (www.nationaltrail.co.uk/sites/default/files/tracker_pack_leaflet.pdf). The Wharram Percy History Detective Tracker Pack can be borrowed for the day from Malton Tourist

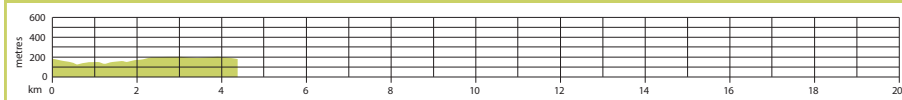
Information Centre (01653 600048) or the Robert Fuller Gallery, Thixendale (01759 368355, www.robertefuller.com), not far from Wharram Percy. Here you can also enjoy looking at the work of one of Britain's foremost wildlife artists and there are nest cams set up on nesting sites around the gallery.

1 Start

Until the boundary changes in 1994, Wharram Percy was part of the East Riding of Yorkshire (it's now in neighbouring North Yorkshire, though very much part of East Yorkshire's Wolds). As the information board at the car park will tell you, Wharram Percy is the most intensively

studied deserted medieval village in England, having been excavated each year between 1950 and 1990. It flourished as a village between the 12th and 14th centuries before final abandonment in c.1500. Today it's in the care of English Heritage. Interpretation panels

GRADIENT PROFILE



20 NORTH YORKSHIRE WHARRAM PERCY

► OS Explorer map 300 ► Buy maps at: ordnancesurvey.co.uk/mapshop

DON'T MISS...



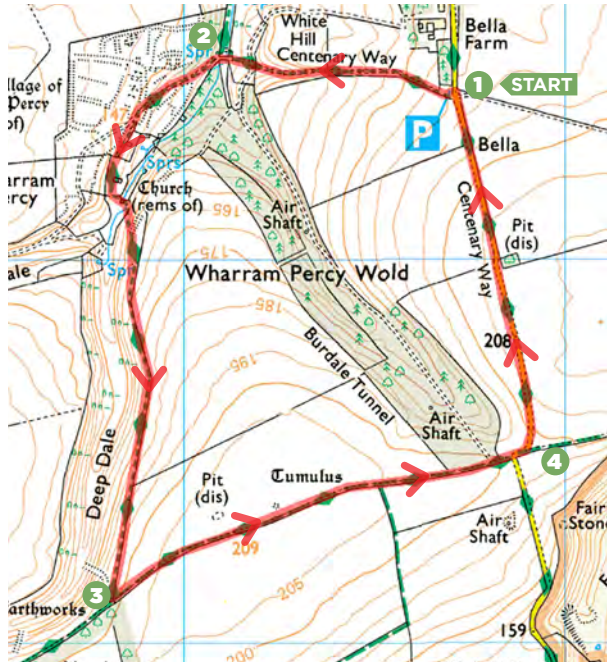
Download an audio tour for Wharram

Percy at www.english-heritage.org.uk/visit/places/wharram-percy

tell its story and recreate the original appearance of the buildings. Follow the signed path from the car park downhill – this stretch is both the route of the Yorkshire Wolds Way (YWW) and the Centenary Way (devised to mark the 100th anniversary of Yorkshire County Council).

2½ mile/500m

At the bottom cross a footbridge and track (old railway line) and go ahead through a gate to enter the Wharram Percy site, bearing L along a track. As the next information panel describes, the village occupied two distinct zones: a narrow valley (Deep Dale) to the L and the higher ground on its western side. The most obviously visible remains are those in the valley: the 19th-century farm cottages and church ruins. However, it's worth having a wander round the earthworks on the higher grassy slopes: to do so take the R fork where the L heads down towards the cottages. Thereafter head past the cottages to the church, and beyond the church you'll come



ORDNANCE SURVEY MAPPING. ©CROWN COPYRIGHT 2016 IN ASSOCIATION WITH MEMORY-MAP/BAUER-MEDIA/AS MEDIA LICENCE NUMBER 042716

to the attractive reconstructed pond, where there's an information panel about the medieval mills and fishpond. Leaving the Wharram Percy site, go through a kissing gate following the signed YWW which leads you up the grassy slopes above Deep Dale. Look back for a fine view of the abandoned settlement nestled in its valley. Continue S along the top of Deep Dale.

3¼ miles/2km

At the first junction, leave the YWW (here signed Wolds Way, as it originally was) and turn L (signed Centenary Way)

and go through a gate. Follow the bridleway, keeping ahead at a junction, to the road.

4.2 miles/3.2km

Turn L along the lane back to the car park. **CW**



TRAILZILLA ID:
TZID30756

Use the TZID to download the walk from www.lfto.com/routes or search for it in the **Country Walking Best Walks in Britain App**

► Download OS maps for PC, iPhone, iPad and Android from £12.50

memory-map

