

# 21 PEMBROKESHIRE ST DAVIDS HEAD

▶ Distance: 4½ miles/7.2km ▶ Time: 2¾ hours ▶ Grade: Moderate



St Davids Head to Ramsey Island.

PHOTO: DENNIS KELSALL



## CHOSEN BY... DENNIS KELSALL

Although only short at 4½ miles, this walk around St Davids Head is packed full of interest, taking in several prominent prehistoric monuments and an Iron Age settlement, as well as the site of a wartime lookout. The clifftop scenery, heightened by the waves crashing at its foot is impressive, while the view from the top of Carn Llidi, particularly at sunset, can be counted among the best in the county.

### 1 Start

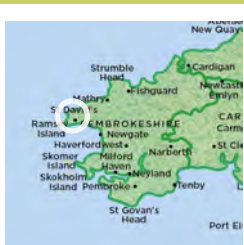
From the Whitesands car park, take the Coast Path north towards St Davids Head.

Keep with the main path past the small promontory of Trwynhwrddyn and on behind the sheltered cove of Porth Lleuog. Later, having passed through a gate, ignore a path off R and look to the skyline in front for a glimpse of Coetan Arthur, the first of the Neolithic burial chambers encountered during the walk. The path then drops to a stream behind Porthmelgan, another secluded, sandy beach, often quieter than Whitesands.

### 2 ¾ mile/1.2km

Cross and bear L on a path that gently rises across the flank of the headland. Ignore a path off up to the R and carry on to the top, shortly reaching a stone barricade across the

## PLAN YOUR WALK



## ROUTE

**Start/parking** Whitesands Bay car park (P&D, Mar-Oct), postcode SA62 6PS, grid ref SM734271

**Is it for me?** Mostly on coastal footpath, some easy scrambling

**Stiles** None

## PLANNING

**Nearest town** St Davids

**Refreshments** Whitesands Beach House, pubs in nearby St Davids

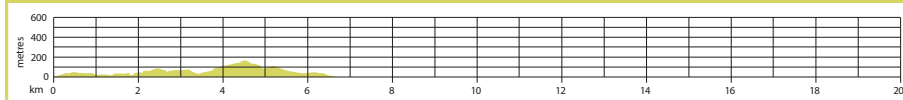
**Public toilets** By car park

**Public transport** Celtic Coaster shuttle bus from Oriell y Parc, St Davids

**Maps** OS Explorer OL35; Landranger 157

neck of the promontory. Known as Warrior's Dyke, it was built to defend a small Iron Age settlement occupying the tip of the headland. Just beyond it are the remains of several small roundhouses in which the small community lived.

## GRADIENT PROFILE



# 21 PEMBROKESHIRE ST DAVIDS HEAD

► OS Explorer map OL35 ► Buy maps at: [ordnancesurvey.co.uk/shop](http://ordnancesurvey.co.uk/shop)

## 3 1¼ miles/2km

After exploring the headland, leave across the northern end of the rampart to follow the ongoing path above the cliffs. As you pass behind the narrow cove of Ogof Coetan, bear off R to find the Coetan Arthur dolmen, hidden among the rocks (SM 7253 2805). Return to continue along the clifftop path, shortly passing a cairn marking the high point of the ridge. Ignore a joining path and walk on down to a junction.

## 4 2¼ miles/3.6km

There bear R and go over crossing path, curving around R to pick up a wall on your left. Now beginning to climb again, follow ongoing path towards the eastern saddle of Carn Llidi. Approaching the crest, watch for distinct path branching off right. Gently rising, it winds across the northern flank of the hill. Ignore narrow paths making their way onto the rocky eastern end of the outcrop until you draw level with the high point. There, an easier path picks its way up a shallow gully to meet the top of ridge, just L of trig column.

## 5 3 miles/4.8km

The stunning view extends across much of the Pembrokeshire peninsula and, on the clearest of days you might even glimpse the Wicklow Mountains, silhouetted



©CROWN COPYRIGHT 2021 ORDNANCE SURVEY. MEDIA 003/21

on the horizon by a late evening sun. Clamber down to the west across the rocks, dropping to the foundations of a wartime installation. The site initially housed a WWI hydrophone station to detect enemy submarines and was reused during WWII as a lookout and Chain Home radar station. The way descends past more foundations and a couple of Stone Age cromlechs to continue between rusting gateposts off the hill.

## 6 3½ miles/5.6km

Meeting another path

lower down, turn back a sharp R. At a fork beyond the corner of a wall, keep L and continue the descent as another path joins, shortly reaching an obvious junction. Bear L again to regain the Coast Path behind Porthmelgan. Head L back to the car park. **CW**

**VIEW THE WALK ON OS MAPS ONLINE:**  
[walk1000miles.co.uk/cwroutes](http://walk1000miles.co.uk/cwroutes)

IN ASSOCIATION WITH



©Country Walking December 2021

DATE WALKED





TIME TAKEN

YOUR RATING





