



15 CUMBRIA ORREST HEAD

▶ Distance: 2km/1½ miles ▶ Time: 1 hour ▶ Grade: Easy

SEE
FEATURE
ON PAGE 28

Was this the view that started an obsession?



PHOTO: TOM BAILEY



CHOSEN BY... NICK HALLISSEY

This is it: the little walk that sparked

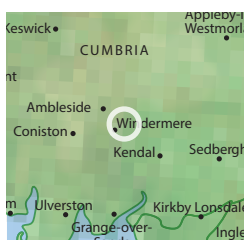
Alfred Wainwright's enduring love-affair with the Lake District. On 7th June 1930, Wainwright and a friend hopped off a train at Windermere Station and climbed this modest height (all 783ft of it). But the view that opened up for them belied the fell's lack of clout: it's a terrific panorama across Windermere to the Langdale Pikes and Bowfell, and north to the Fairfield fells. He wrote later, "It was a moment of magic, a revelation so unexpected that I stood transfixed, unable to believe my eyes." Enjoy this short

walk, and see if it inspires you in the same way...

1 Start
Walk down road, passing Windermere Hotel R and station L. Turn R onto small side-road, signed for Orrest Head. Immediately turn L off road on footpath signed for Troutbeck Road. Continue into woodland, following wall L to reach junction of paths.

2 500m/½ mile
Turn R uphill with sign for Orrest Head. Path becomes enclosed by walls both sides, continuing uphill. Path veers R to reach junction. Continue uphill on wooden steps, still signed for Orrest Head. Path levels out and climbs with

PLAN YOUR WALK



ROUTE

Start/parking Free layby parking just above Windermere Hotel, grid ref SD414986

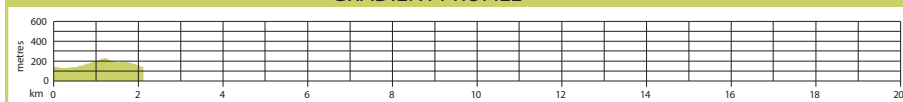
Is it for me? Easy paths through woodland and fields, summit rocks can be slippery
Stiles None (1 squeeze-stile)

PLANNING

Nearest town Windermere
Refreshments Plenty in Windermere
Public toilets None on route
Public transport Mainline trains to Windermere station. Bus services 555 and 556 connect Windermere with Kendal, Ambleside and Keswick
Maps OS Explorer OL7, Landranger 97

fence R. Eventually path turns L through metal kissing-gate and climbs steps to Orrest Head. ➔

GRADIENT PROFILE



15 CUMBRIA
ORREST HEAD▶ OS Explorer map OL7 ▶ Buy maps at: ordnancesurvey.co.uk/mapshop

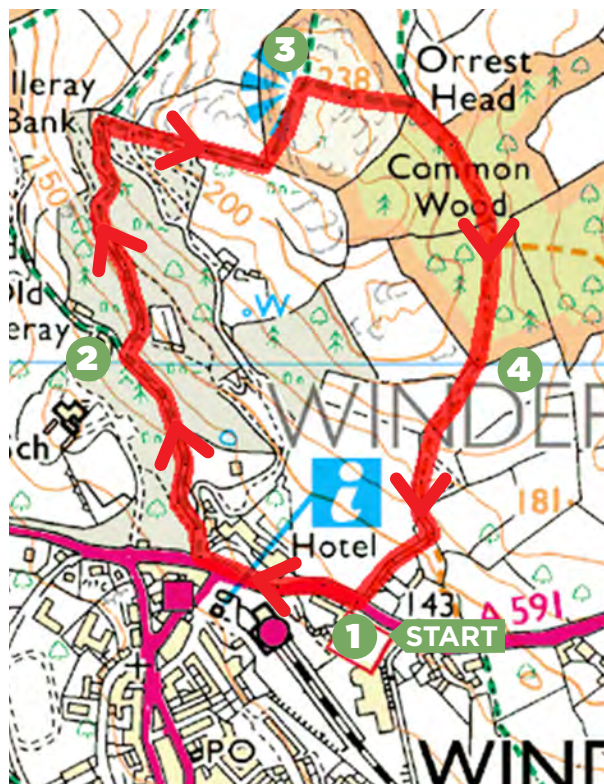
DON'T MISS...



Homeground Coffee & Kitchen on Main Street serves amazing locally roasted flat whites and lattes and has a lovely brunch menu. Closed Wednesdays. (Tel: 015394 44863)

3 1.1km/¾ mile
Continue ahead over the summit and descend on the path on the far side. Descend through the woodland to reach the squeeze-stile through wall. Go through squeeze-stile and turn immediate R through the kissing-gate to continue through the woods, eventually reaching a gate on the edge of the woodland.

4 1.65km/1 mile
Go through the gate and emerge from woods. Continue on open hillside towards Windermere. Descend hillside, then branch R through



ORDNANCE SURVEY MAPPING © CROWN COPYRIGHT 2015 IN ASSOCIATION WITH MEMORIAL MAPS/BLENHEIM MEDIA LICENSE NUMBER 09/7/15

hole in tumbledown wall just before gate. Go through next gate and continue downhill

towards road. Emerge through gate onto road and turn R to return to layby. **CW**



PHOTO: TOM BAILEY

TRAILZILLA ID:
TZID28708

Use the TZID to download the walk from www.lfto.com/routes or search for it in the **Country Walking Best Walks in Britain App**

▶ Download OS maps for PC, iPhone, iPad and Android from £12.50

memory-map



© Country Walking February 2016