

22 DENBIGHSHIRE MOEL FAMAU

▶ Distance: 3½ miles/5.8km ▶ Time: 2 hours ▶ Grade: Moderate

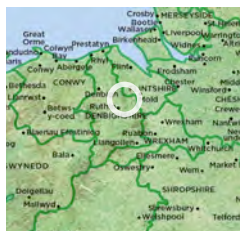
SEE
FEATURE
ON PAGE 48



Beginning the fairly steep ascent to the summit.

PHOTO: MATTHEW PIKE

PLAN YOUR WALK



ROUTE

Start/parking Coed Moel Famau car park (£2 all day, correct change required, marked on Google Maps as Moel Famau Lower Car Park), Bwlch Penbarras grid ref SJ171611

Is it for me? Broad, stony paths that are easy to follow. Most ascent is gradual, with one steeper section approaching the summit. Descent is also quite steep only near top

Stiles None

PLANNING

Nearest town Ruthin

Refreshments We Three Loggerheads, Ruthin Road, Loggerheads (two miles from Coed Moel Famau car park, Tel: 01352 810337)

Public toilets Coed Moel Famau car park

Public transport None

Maps OS Explorer 265; Landranger 116



CHOSEN BY...

MATTHEW PIKE

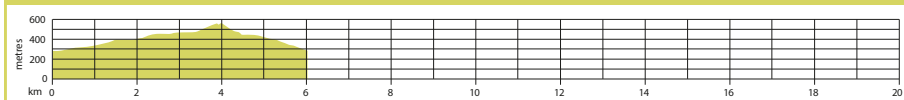
Moel Famau (1818ft) is the highest hill in the Clwydian Range – a narrow band of heather-clad summits that run close to the English border. Despite its height, getting to the top isn't too arduous, and this popular route is as frequented by children as it is by pensioners, and everyone in between. It follows a wide gravel track that's part of Offa's Dyke Path, and views from the top are extensive – from the more populated eastern areas of Merseyside and the Dee Estuary to the green farmland and forest out west and, beyond this, the distant summits of Snowdonia.

You can even see out to the Irish Sea and the giant wind turbines that spin above the water. If you're expecting to see a tower when you see signs to Jubilee Tower, don't get your hopes up, or think you've taken a wrong turn. The structure, which was built in 1810 to mark George III's golden jubilee, collapsed in dramatic fashion in 1862 (the crash could be heard in Denbigh, some seven miles away). What's left is the partially-restored foundation, which is a clearly visible target once you're on the ridge.

1 Start

From the barrier as cars enter the car park (facing away from the direction of the road),

GRADIENT PROFILE



22 DENBIGHSHIRE
MOEL FAMAU▶ OS Explorer map 265 ▶ Buy maps at: ordnancesurvey.co.uk/shop

©CROWN COPYRIGHT 2021 ORDNANCE SURVEY MEDIA 003/21

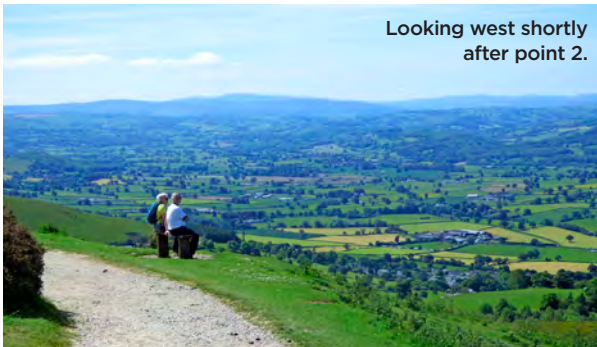
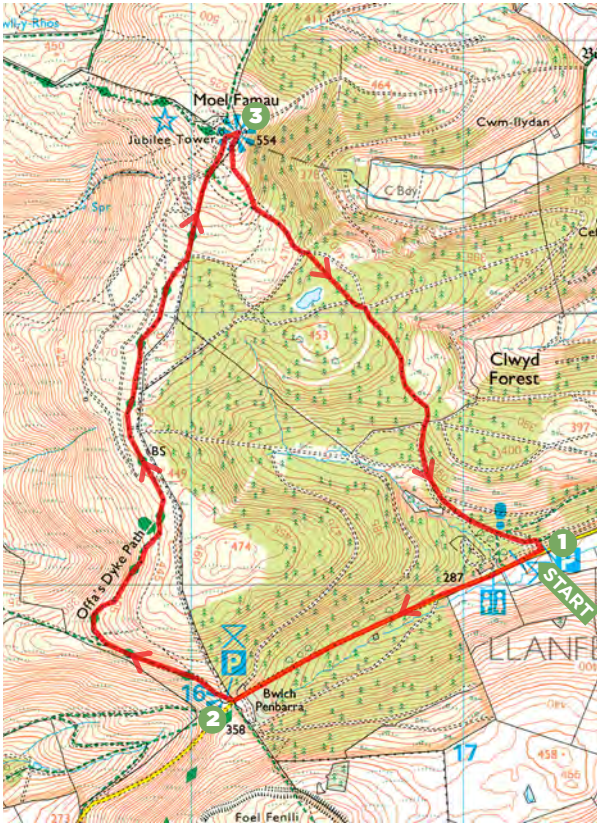
Looking west shortly
after point 2.

PHOTO: MATTHEW PIKE

follow the lane that leads round to the L. Then at the 'Overflow Car Park' sign, take the good track L, which soon runs parallel to the road below on your L. Follow the track as it gradually makes an ascent to the car park at Bwlch Penbarra.

2¾ mile/1.2km
Head through the car park and, at the far right corner, take the broad gravel track (Offa's Dyke Path). This gradually climbs the western slopes, then eases off at the ridge before starting the final and relatively steep ascent to the summit.

3¼ miles/3.8km
When you reach the summit, enjoy the view then take a sharp R (it's almost as if you're going back on yourself) through the kissing gate and follow the clear, broad stony path that's heading steeply downhill. Stick to the main path as it heads into the forest, before continuing straight at the path junctions, and then finally heading back to the car park where you first started out. **CW**

VIEW THE WALK ON OS MAPS ONLINE:
walk1000miles.co.uk/cwroutes

IN ASSOCIATION WITH



©Country Walking September 2021

DATE WALKED

TIME TAKEN
YOUR RATING