



13 DERBYSHIRE MAM TOR

▶ Distance: 2¼ miles/3.6km ▶ Time: 1¼ hours ▶ Grade: Easy

SEE
FEATURE
ON PAGE 11



Descending Mam Tor towards Hollins Cross.

PHOTO: NICK HALLISSEY

PLAN YOUR WALK



ROUTE

Start/parking Limited spaces at top of Old Mam Tor road, near entrance to Blue John Cavern. grid ref SK131834, postcode S33 8WA (not quite accurate; follow signs for Blue John)

Is it for me? Short, easy hill-walk; stepped path to Mam Tor summit is steep and ledge path is uneven and narrow in places. A great 'first mountain walk'

Stiles None

PLANNING

Nearest town Chapel-en-le-Frith

Refreshments Shop and seasonal kiosk at Blue John Cavern

Public toilets None

Public transport Stagecoach Hope Valley Explorer bus H1 connects Blue John Cavern with Castleton, Hope and Hathersage (May-Sep only)

Maps OS Explorer OL1; Landranger 110



CHOSEN BY...
NICK HALLISSEY

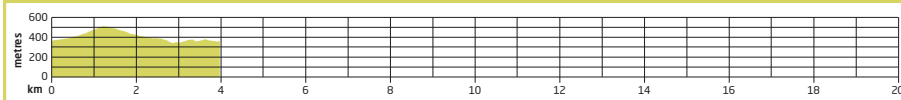
The crumbling cliff face of Mam Tor is an iconic sight throughout the Hope Valley. This super-short walk gets you up close and personal with that collapsing east flank, starting and ending at the remains of the old A625 road, which was consumed by the hill over a number of decades. It also takes in the superb view from Mam Tor's summit, a short stretch of the famed Great Ridge, and a little-known traverse path which passes directly beneath the landslide. It's perfect for young families, or for an early-morning or late-evening mini-adventure when parking areas may be less busy.

1 Start

Head back up the old road towards main road, away from Blue John Cavern. Just before junction with main road, turn R through mini-gate (NT sign, Mam Tor). Follow grassy path climbing steadily over hillside, keeping L of wall line. Nearing upper road, path reaches junction. Turn R, pass through gate and ascend to emerge on road at Mam Nick. Turn immediate L through gate (pass another NT sign for Mam Tor) to join stepped path climbing steadily. Path passes through earthworks of ancient hill fort and eventually reaches summit of Mam Tor (1696ft/517m).

2 ¾ mile/1.2 km Continue over summit and

GRADIENT PROFILE



13 DERBYSHIRE
MAM TOR▶ OS Explorer map OL1 ▶ Buy maps at: ordnancesurvey.co.uk/shopThe old A625 below
Mam Tor.

PHOTO: NICK HALLISSEY

take wide, flagstoned path descending northwards, again passing through earthworks of hill fort. The Great Ridge is now in view ahead. Descend to gate and pass through. Then, after 250 yards, take first footpath R.

3 $1\frac{1}{2}$ miles/2.3km
Follow path, faint at first, as it traverses the flank of Mam Tor just above the 350m contour line on OS maps. Where path splits, take R (higher) fork to remain on the traverse path. Passing beneath the face of Mam Tor,

the ground opens out into a hollow bowl, providing fine views of the cliff face as you walk between spoilheaps generated by years of landslips.

Path eventually descends to reach the old road. Detour L to view damage done to the road by landslips, then pass through gate to return to parking areas. **CW**

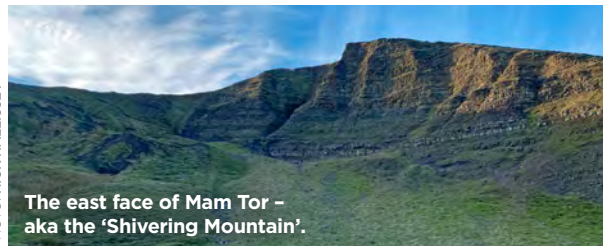
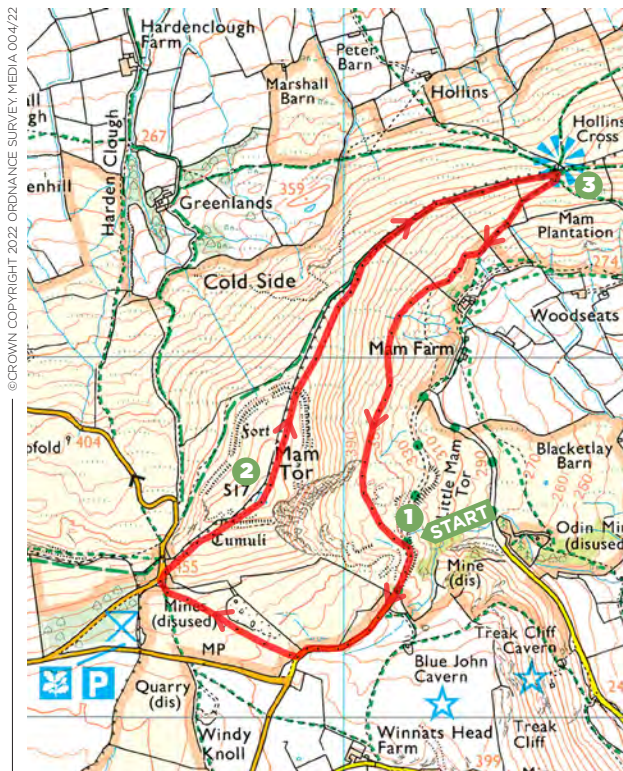
The east face of Mam Tor -
aka the 'Shivering Mountain'.

PHOTO: NICK HALLISSEY



©CROWN COPYRIGHT 2022. ORDNANCE SURVEY. MEDIA 004/22

DATE WALKED
□ □ □ □ □ □ □ □TIME TAKEN
□ □ □ □ □ □ □ □YOUR RATING
○ ○ ○ ○ ○ ○ ○ ○VIEW THE WALK ON
OS MAPS ONLINE:walk1000miles.co.uk/cwroutes

IN ASSOCIATION WITH

Ordnance
Survey

© Country Walking November 2022