



# 10 CAMBRIDGESHIRE GRANTCHESTER

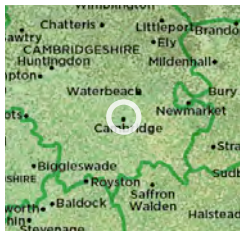
Distance: 8 miles/13km Time: 4 hours Grade: Moderate



Punters on the River Cam in Cambridge.

PHOTO: PHOEBE TAPLIN

## PLAN YOUR WALK



### ROUTE

**Start/parking** Cambridge railway station, postcode CB1 2JW, grid ref TL461572  
**Is it for me?** Level and generally straightforward. Could divide this figure-of-eight into two walks  
**Stiles** 1

### PLANNING

**Nearest town** Cambridge  
**Refreshments** Plenty of choice  
**Public toilets** Bus station and Lammas Land (near Point 7)  
**Public transport** Regular trains from London, Norwich and others ([greateranglia.co.uk](http://greateranglia.co.uk))  
**Maps** OS Explorer 209; Landranger 154



CHOSEN BY...

### PHOEBE TAPLIN

Explore Cambridge, passing world-famous churches and colleges, and then hike to the village of Grantchester and back along the winding River Cam. Lots to see and dozens of great pubs so take your time.

### 1 Start

Turn R out of Cambridge station. Walk between Ibis and Sainsbury's into station car park and keep straight. After walking under huge footbridge, head L to corner of Devonshire Road and turn R. At White Swan, turn L along colourful Mill Road. Cross A603 and keep straight along Parkside to bus station.

### 2 1 mile/1.5km

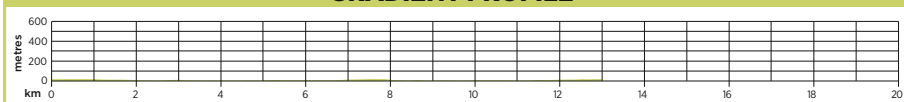
Turn R, after public toilets, across Christ's Pieces (park). Keep straight along Pike's Walk and Belmont Place and turn L along Jesus Lane. Follow it to T-junction. Turn R on Bridge Street to Round Church. Turn L along St John's Street and continue on Trinity Street until you reach wider cobbled area with King's College Chapel ahead.

### 3 2 miles/3.2km

Turn R before chapel down narrow Senate House Passage by neoclassical Senate House. Turn R into Trinity Lane, L along Garret Hostel Lane and follow it over river. Turn L before road ahead and continue, parallel with road

along any convenient path. Turn L on Silver Street. Cross river with view of Mathematical Bridge. Turn R into narrow Laundress Lane and R again past Mill pub, back over river.

## GRADIENT PROFILE



# 10 CAMBRIDGESHIRE GRANTCHESTER

OS Explorer map 209 Buy maps at: [ordnancesurvey.co.uk/shop](http://ordnancesurvey.co.uk/shop)

## 4 2¾ miles/4.5km

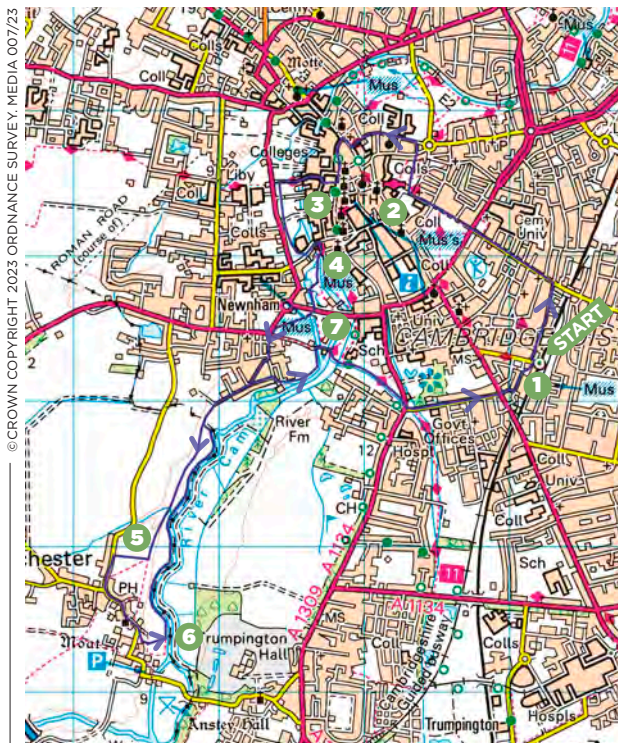
Turn L with water on L. Soon head diagonally R on surfaced path over meadow to millpond. Cross footbridge towards Millworks restaurant and turn L before it along tarmac path. Reaching Fen Causeway, cross road and bridge and walk diagonally across Lammas Land on tarmac path with white line down middle. On far side of park, turn L. Cross Driftway and continue along Grantchester Street. Turn third R into Eltisley Avenue and keep L. Continue along Grantchester Meadows and tarmac path with hedge on R for ¾ mile.

## 5 4¼ miles/7km

When hedge on R ends, turn R and follow path to Blue Ball pub in Grantchester. Turn L along lane and follow it past Rupert Brooke pub and along winding High Street. Head R at village green to Grantchester church. Keep L on Mill Way. Where road bends R, fork L into Spring Lane and follow sign into Orchard tea garden. Exit L through gate from far end of garden and head diagonally L across meadow to River Cam.

## 6 5 miles/8km

Turn L and continue with water on R for one mile. Keep following winding river, over bridges, until path leads L. Turn R on surfaced path past



© CROWN COPYRIGHT 2023 ORDNANCE SURVEY. MEDIA 007/23

Skaters' Meadow and keep straight into lane. Keep R along Grantchester Meadows. Keep R again, following signed Riverside Walk towards City Centre. Follow lane L and soon turn R through gate into Paradise nature reserve. Follow path to river and continue with water on R.

## 7 6½ miles/11km

Keep going by car park and turn R over footbridge. Keep straight over another footbridge and follow surfaced

path. Fork R by field, following sign to Trumpington. Cross A1134 and continue on Brooklands Avenue. At end, cross Hills Road to Brooklands and follow it R. Turn L at end on Station Place. [CW](http://www.cw.org.uk)

**VIEW THE WALK ON OS MAPS ONLINE:**  
[walk1000miles.co.uk/cwroutes](http://walk1000miles.co.uk/cwroutes)

IN ASSOCIATION WITH



DATE WALKED






TIME TAKEN






YOUR RATING