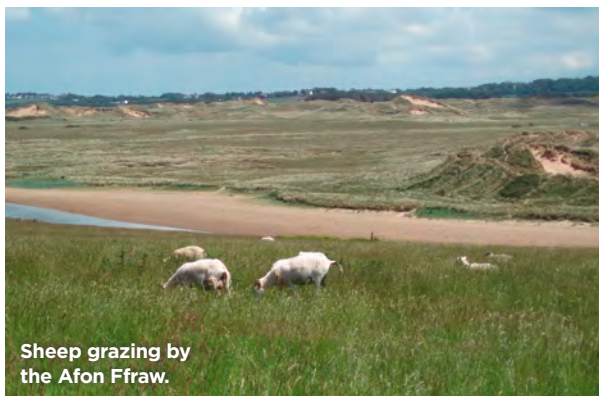


22 ANGLESEY ABERFFRAW

▶ Distance: 5 miles/8.3km ▶ Time: 2½ hours ▶ Grade: Easy



Sheep grazing by the Afon Ffraw.

PHOTO: DOROTHY HAMILTON



CHOSEN BY... DOROTHY HAMILTON

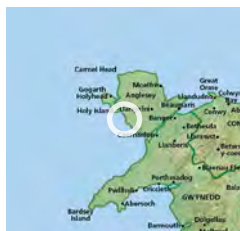
The small village of Aberffraw was the most important place in north Wales from the 6th to the 13th century, when the Princes of Gwynedd based their court here. Nowadays, it's the starting point of a delightful walk to Porth Cwyfan with its tiny church standing on a walled island, which you can reach at low tide by a causeway. (For tide times check www.surf-forecast.com/breaks/Aberffraw). The route then traces the coastal path along low cliffs to Trwyn Du, where embedded stones indicate a Bronze Age grave, before following the river

back to the old humpbacked bridge at the start.

1 Start From the car park, cross the old bridge and keep ahead, uphill. Pass Y Goran pub and, in the square, turn L. Take L fork to walk towards the information boards near the church. Veer L to pass school R then turn R at footpath signpost to a kissing-gate. Walk through fields, with great views L of Aberffraw dunes, to an enclosed path. Emerge on a track and keep ahead, passing houses on R.

2 ¾ mile/1km Stay on the main track, ignore tracks L, pass a ruin

PLAN YOUR WALK



ROUTE

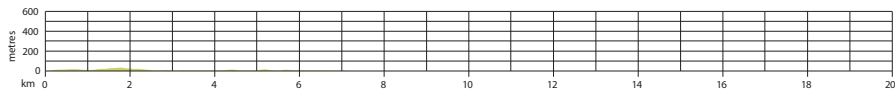
Start/parking Aberffraw car park near the old bridge, grid ref SH356690
Is it for me? Field paths, track, lane and coastal path along low cliffs and shore
Stiles None

PLANNING

Nearest town Llangefni
Refreshments Pub and tearoom in Aberffraw
Public toilets In Aberffraw near Llys Llywelyn
Public transport Bus 25 from Holyhead
Maps OS Explorer 262; Landranger 114

L and emerge on a lane. Turn L, downhill, with views of the church on its tiny island ahead of you. The lane ends at Porth Cwyfan where, if the tide is low, you have the option of going R along the beach and crossing the causeway to St Cwyfan's Church. →

GRADIENT PROFILE



22 ANGLESEY
ABERFFRAW▶ OS Explorer map 262 ▶ Buy maps at: ordnancesurvey.co.uk/shop

DATE WALKED

TIME TAKEN

YOUR RATING

DON'T MISS...



Keep a watch on the rocks off-shore for seals basking on warm days and cormorants taking a break from fishing.

3.2 miles/3.4km

Return along the beach, pass the lane end and continue along the rocky and sandy shore to steps leading up to a kissing-gate. Follow the coast path along low cliffs for about

2km to where it drops to the shore. A little further on it goes up steps to a kissing-gate and continues above cliffs and a small beach. When the path bends L it is worth making a diversion onto Trwyn Du headland. Here there is a stone seat with views over Aberffraw Bay and, near the cliff edge, the stones from the Bronze Age cairn protrude through the grass.

4.4 miles/6.8km

Return to the coast path and follow it downhill to the River Ffaw. Walk on through

a marshy area and pass a cottage on L. A little further on, go up steps and follow the path above a wall. At houses, go R on a short path to a track beside the river where you go L to the old bridge and car park. **CW**

VIEW THE WALK ON OS MAPS ONLINE:

lfto.com/cwroutes

IN ASSOCIATION WITH



OS MAPS



Ordnance Survey